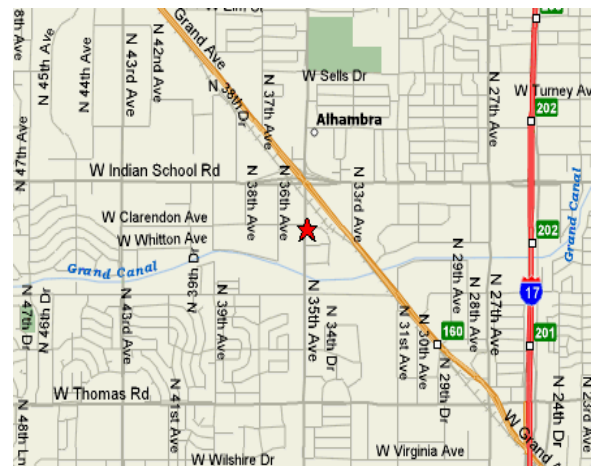


AVAILABLE

3805 N. 34th Avenue
2,880 Sq. Ft.

Features:

- Located just min. from I-10 & I-17 freeways
- 500 sq. ft. a/c office area (Reception, 2 offices & 2 restrooms)
- 2,400 sq. ft. +/- evap. cooled warehouse
- 14' Minimum clear height
- One (1) 10' x 10' grade door
- A-2 Zoning, City of Phoenix
- Excellent accessibility
- 200 amps, 120/208 volt, 3 Phase Power
- Building Signage
- **Competitive Gross Rental Rates**



5100 N. 40th Street
Phoenix, Arizona 85018
(602) 438-8000
(602) 438-7940 fax
www.azindprop.com

For More Information Contact:

Randy S. Warner
(602) 438-8000

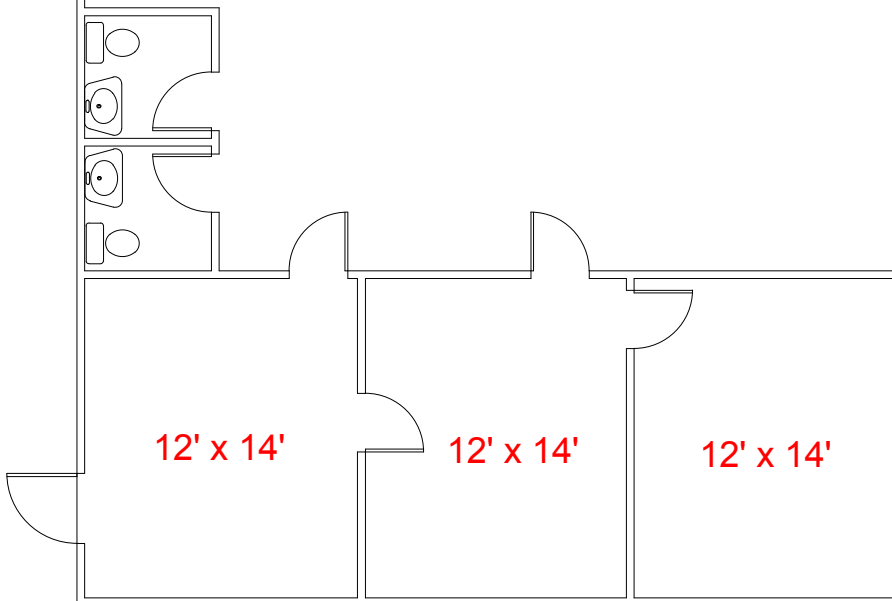
randy@azindprop.com

5% Commission - Flat Lease Rates - No CAM's

The information contained herein has been obtained from sources we deem reliable. However, no warranties or representations, expressed or implied, are made as to the accuracy of any information contained herein, and the information is subject to errors and omissions. This information is also subject to change of price, rental or other conditions, withdrawal without notice, and to any special listing conditions imposed by our principals.

10' x 10' Grade Door

Warehouse



Drawing Not To Scale
For Reference Only

3805 N. 34th Avenue
Approx. 2,880 Sq. Ft.