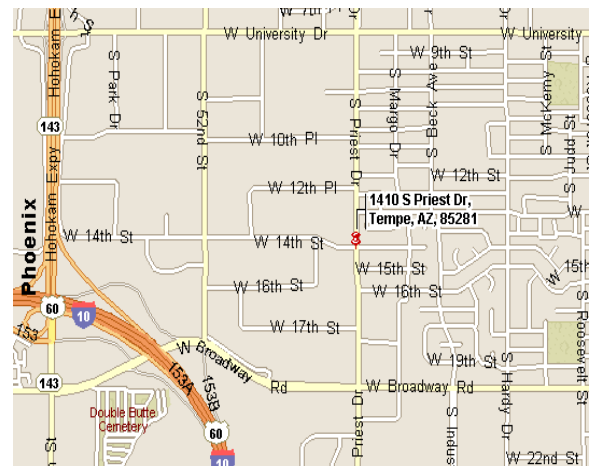


# AVAILABLE

1410 W. 14<sup>th</sup> Street, #101  
10,425 Sq. Ft.

## Features:

- Located just min. from I-10 & 202 freeways
- 5,000 sq. ft. a/c office area (Open front showroom/bullpen areas, 3 offices, conference room & 2 RR)
- 5,400 sq. ft. +/- evap. cooled warehouse
- 21' Minimum clear height
- Two (2) 12' x 14' grade doors
- I-1 Zoning, City of Tempe
- Excellent accessibility
- 400 amps, 277/480 volt, 3 phase power
- Truckwell
- **Competitive Gross Rental Rates**



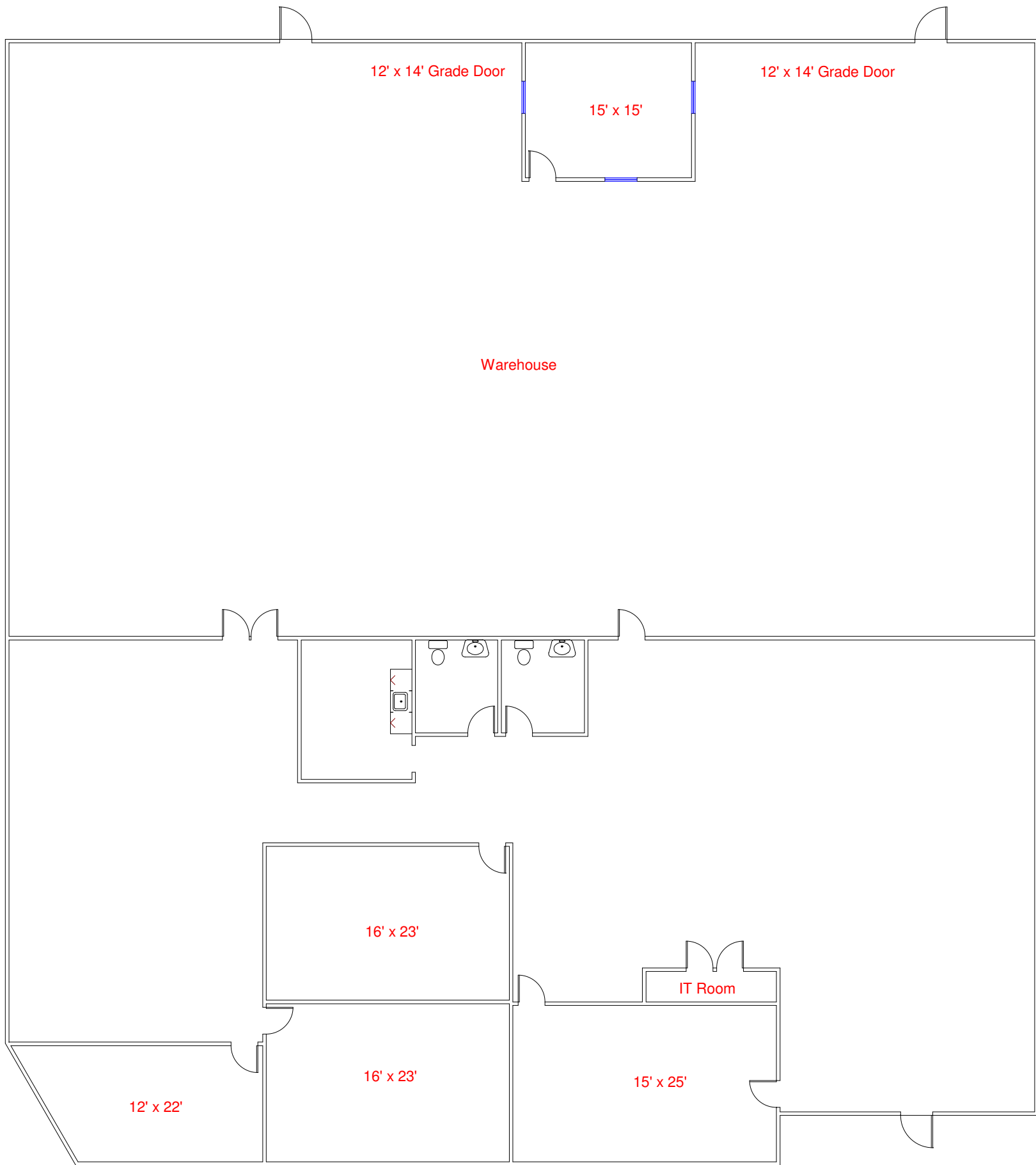
5100 N. 40<sup>th</sup> Street  
Phoenix, Arizona 85018  
(602) 438-8000  
(602) 438-7940 fax  
[www.azindprop.com](http://www.azindprop.com)

For More Information Contact:

**Randy S. Warner**  
**(602) 438-8000**  
[randy@azindprop.com](mailto:randy@azindprop.com)

**5% Commission - Flat Lease Rates - No CAM's**

The information contained herein has been obtained from sources we deem reliable. However, no warranties or representations, expressed or implied, are made as to the accuracy of any information contained herein, and the information is subject to errors and omissions. This information is also subject to change of price, rental or other conditions, withdrawal without notice, and to any special listing conditions imposed by our principals.



Drawing Not To Scale  
For Reference Only

1410 W. 14th St. Ste. 101  
Approx. 10,425 Sq. Ft.